

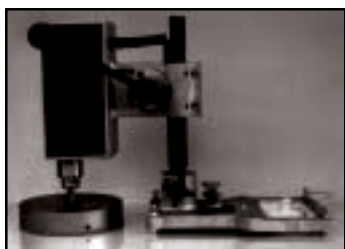
# Swivel Drill®



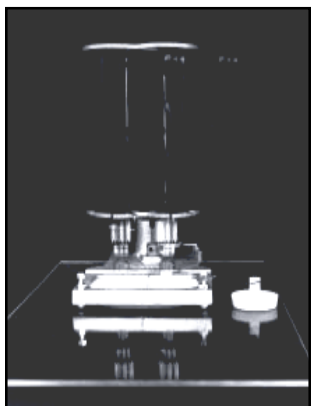
Patent #  
4,468,159



Video  
Demonstration  
Available.



Swivel head to the side for  
larger holes, up to 6 inches.



Drill first hole. Swivel  
head to drill second hole.

## Instructions for using the Swivel Drill®

1. Put Diamond Drill bit in Chuck and tighten.
2. Align Machine base with center lines of your cut out.
3. Press downward on base of machine and flip lever to lock suction cup to glass.
4. Fill dam in base approx 1/8" deep with our Diamacut Coolant or 10% Prestone® antifreeze and 90% water.
5. Move head to first position and turn locking knob(QSDMKNOB) to lock head in place. Drill first hole. Let drill do the work don't try to use brute force. Remember to come out of the hole every 5 seconds or so to allow coolant back into the cut.
6. Move head to second position.
7. Remove slug and Insert rubber plug. Refill dam with coolant. Drill second hole.

## Adjustments and fine tuning

**Levelling Screws (SDM04)**-Tighten all Nylon Cap Nuts then retract screws so they don't touch glass. Attach drill to glass using vacuum cup in base. Slowly bring down each foot until it just touches a piece of paper placed between the nylon cap nut and the glass. Once adjusted, lock the screws in place with double opposing nuts. If you need to adjust any single screw more than 1 full turn, then you should send the drill in and have us look at it here in the factory.

**Side to Side** adjustment if you need to drill a slightly larger outlet (for a decora, etc.). Loosen back screws by the locating pin (QSC1010SA & QNUT1032J) until desired size is reached. This will allow the head to move further to each side. *Make sure your drill won't cut through suction ring wall.* Tighten the side locking nuts.

*We recommend leaving all other settings alone. They can be difficult to achieve without the proper tools and fixtures. If you send us your machine we will gladly adjust it and give you an estimate to bring your machine to like new condition.*

**Tip:** To extend the life of your machine, you should remove 3 screws from one side of the black motor cover and blow glass dust out of the motor. This should be done frequently.

## DRILLING MACHINE REPAIRS

We repair all drilling machines we manufacture. Send us your old machine for an estimate. We actually repair your equipment before the estimate is given, so there are no hidden costs. Or, do it yourself using the parts listed below:

### Replacement Parts

