



High Hat & Hole Removing Tools

Freez-It Spray™



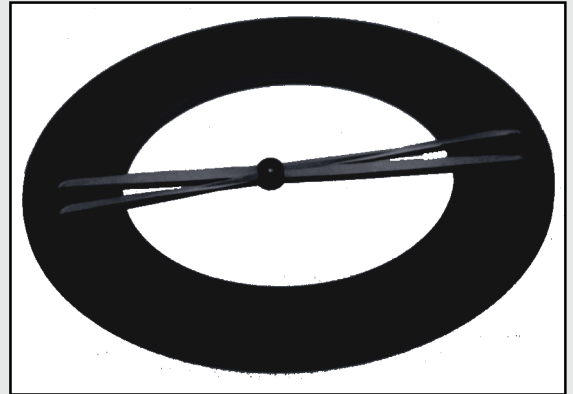
FR10 Freez-It Spray™ (7 oz)
Shipping weight 10 lbs. case



This improved "Ozone Safe" formula is colder, thus allowing you to use less spray while achieving faster freezing action.

Video Demo Available
See page 9 for details

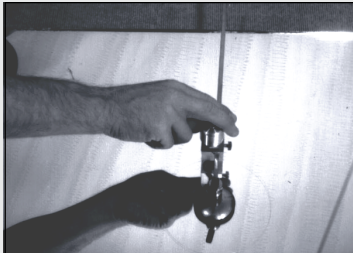
Glass SlingShot™



Use the Glass SlingShot™ in conjunction with our Freez-It Spray™ to remove high hats in seconds. The Glass SlingShot™ comes ready to use. Refill kit includes: 2 BB's, a threading wire, and extra rubber bands. No toolbox should be without one.

SLING Glass SlingShot™
SLINGFIL Refill Kit

1



Using a circle cutter, scribe the circle. Be careful not to overlap the score or it may run out. This method can only be used on circles larger than 3" in diameter. For smaller holes use your diamond drill.

2



Direct Freez-It Spray™ to the center of the circle. Press down on nozzle with full force allowing maximum flow. This will completely run the cut. On larger cuts, over 6", direct spray approximately 3 - 4 inches away from the edge of the cut. When the circle starts to run, move nozzle towards edge and follow around until completely run.

3



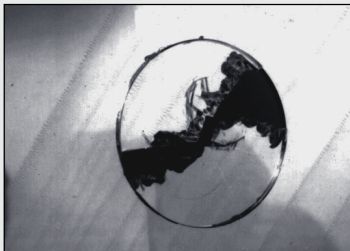
With your glass cutter, score two lines in the center to help start the break. Then, take your Glass SlingShot™ and line up with one of the lines. Pull up on the ball approximately 3" and release. This will cause the glass to fracture along one of the lines.

4



Continue to pull on the ball and release following the fracture line created in step 3. Be sure to use less and less pressure as you approach the outer edges. Continue until you have a full break across the center hole.

5



From here the rest is easy. One more light shot from the Glass SlingShot™ and the rest will fall out. You may notice some minor chipping around the edge, but there are no runs. Most chips can generally be hidden with a trim ring or a donut.

6



If you can not afford any chipping then perform steps 1 & 2. Drill 2 holes, one on each side, that just kiss the edge of the run. Next, score a few lines between the holes and break out using the Glass SlingShot™.